

**MATERIAL SPECIFICATIONS**

SHELL: 304 STAINLESS STEEL

LUGS: 304 STAINLESS STEEL

BOLTS, WASHERS AND NUTS: NC ROLLED THREAD  
304 STAINLESS STEEL, 5/8" DIAMETER.

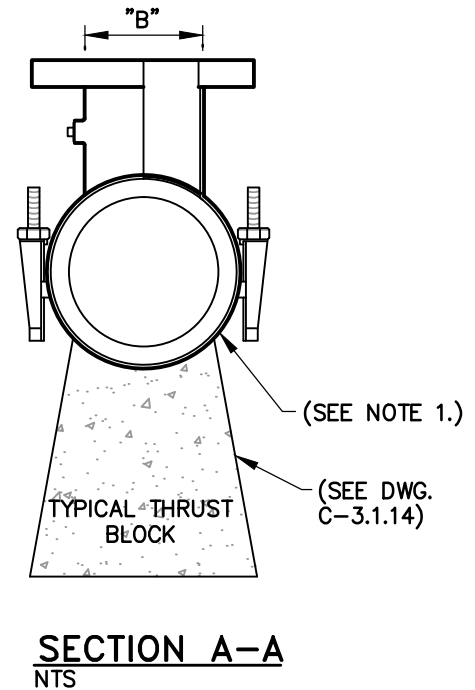
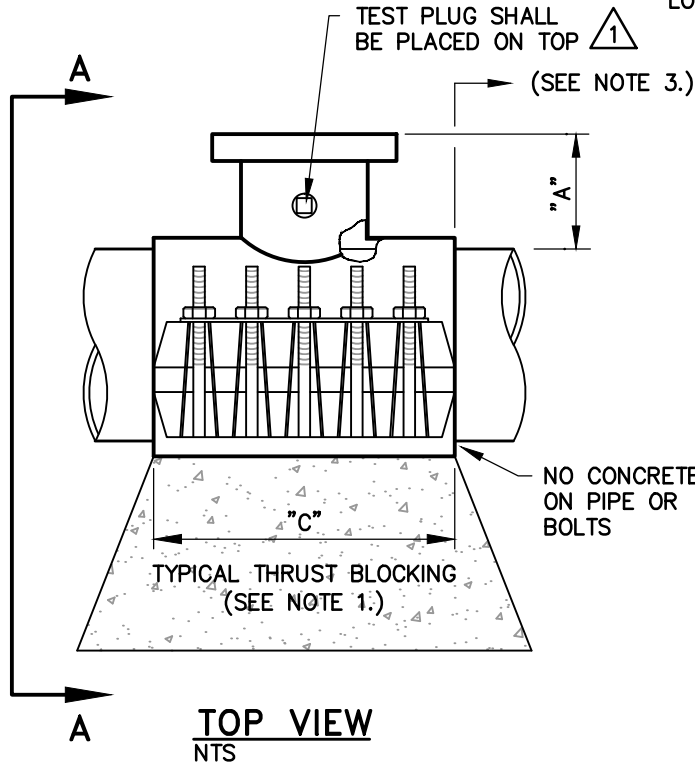
GASKETS: VIRGIN SBR COMPOUNDED FOR WATER SERVICE. ASTM D2000-80MA 4AA607 FULL GASKET. 360° PIPE COVERAGE 150 PSI MIN. WORKING PRESSURE.

FLANGE: 304 STAINLESS STEEL OR HIGH TENSILE DUCTILE (NODULAR) IRON, ASTM A536-80, GRADE 65-45-12.

NOM. FLANGE	A	B	C	NO. BOLTS
4	4"	5-1/32"	16"	10
6*	4-1/2"	7-1/32"	16"	10
8*	4"	9-1/32"	20"	14
10	5-1/2"	11-1/32"	24"	16
12**	6-1/2"	13-1/32"	30"	30

\*TAPPING SLEEVES IN THE 24" NOMINAL PIPE SIZE RANGE WITH 6" OR 8" FLANGES ARE 24" LONG (C-DIMENSION).

\*\*TAPPING SLEEVES IN THE 12" & 14" NOMINAL PIPE SIZE RANGE W/ 12" FLANGE ARE 24" LONG AND HAVE 24 BOLTS.



**NOTES:**

1. MATERIAL USED FOR THRUST BLOCKING SHALL NOT PREVENT ACCESS TO THE BOLT ASSEMBLY. THRUST BLOCKS SHALL NOT BE POURED UNTIL PRESSURE TEST AND TAPPING ARE COMPLETE.
2. MINIMUM DISTANCE BETWEEN TAP SADDLE, COLLARS, JOINTS, SERVICE TAPS, ETC. SHALL BE 18 INCHES CLEAR.
3. THE CONTRACTOR SHALL CONTACT THE WATER OPERATIONS SUPERVISOR AT LEAST 2 WORKING DAYS PRIOR TO SCHEDULING HOT TAP DATE AND TIME (HOT TAPS ARE PERFORMED TUESDAY THRU THURSDAY EXCLUDING THE WORKING DAYS BEFORE AND AFTER A HOLIDAY). PRIOR TO HOT TAPPING, THE SADDLE SHALL BE HYDROSTATICALLY PRESSURE TESTED TO 150 PSI MINIMUM OR THE DESIGN OF PIPE SYSTEM FOR A MINIMUM OF 5 MINUTES. THE TEST SHALL BE PERFORMED IN THE PRESENCE OF THE WATER UTILITY PERSONNEL PRIOR TO PERFORMING THE TAP. ALL TAPPING EQUIPMENT SHALL BE INSPECTED BY AND DISINFECTED IN THE PRESENCE OF CITY FORCES PRIOR TO TAPPING A CITY MAIN.

NO.	REVISION	DATE	STANDARD DETAIL FOR PUBLIC WORKS CONSTRUCTION	SECTION
1	NOTE 3	9/17	<b>TAPPING SLEEVE</b>	CARSON CITY
				DRAWING NO. C-3.1.3 (203,307)
				DATE SEP 2017
APPROVED BY:				